



JetBox Modbus2SNMP

User Manual

www.korenix.com

Copyright Notice

Copyright© 2011 Korenix Technology Co., Ltd.

All rights reserved.

Reproduction without permission is prohibited.

Information provided in this manual is intended to be accurate and reliable. However, the original manufacturer assumes no responsibility for its use, or for any infringements upon the rights of third parties that may result from its use. The material in this document is for product information only and is subject to change without notice. While reasonable efforts have been made in the preparation of this document to assure its accuracy, Korenix assumes no liabilities resulting from errors or omissions in this document, or from the use of the information contained herein.

Korenix reserves the right to make changes in the product design without notice to its users.

Acknowledgments

Korenix is a registered trademark of Korenix Technology Co., Ltd.

All other trademarks or registered marks in the manual belong to their respective manufacturers.

Table of Content

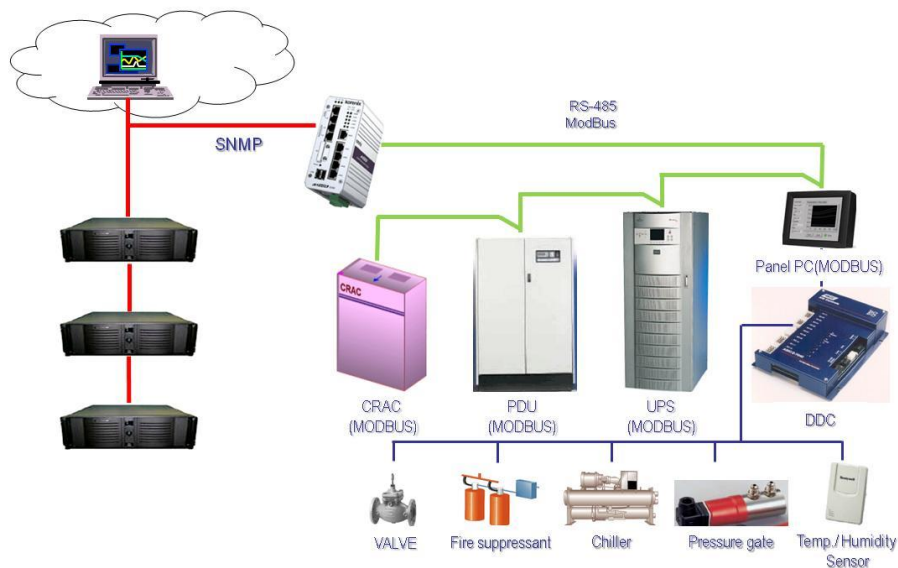
Copyright Notice	2
Acknowledgments.....	2
Table of Content	3
Chapter 1 Introduction	4
1-1 Applied Models	5
Chapter 2 Modbus2SNMP	5
2-1 How to Map Modbus ID to SNMP OID.....	5
2-2 How to Use Modbus2SNMP	6
Chapter 3 Appendix	8
3-1 Revision history	8
3-2 Customer Service	8

Chapter 1 Introduction

The data center monitoring includes UPS, PDU, cooling system, security and environmental monitoring and most of these devices go for Modbus RTU control, an automation control protocol. But with the popularity of Ethernet, the management of control center goes for SNMP, a network management protocol. SNMP is generally used by IT management and the advantage to adapt SNMP in automation is the read/write privilege and easy management.

JetBox works as a gateway between Modbus RTU and SNMP and bring customers benefit from an integrated solution composed of data center monitoring and IT management tools. This combination provides single view of each customer's data center monitoring and IT management.

Cloud Data Center Monitoring



1-1 Applied Models

JetBox9300(-w)

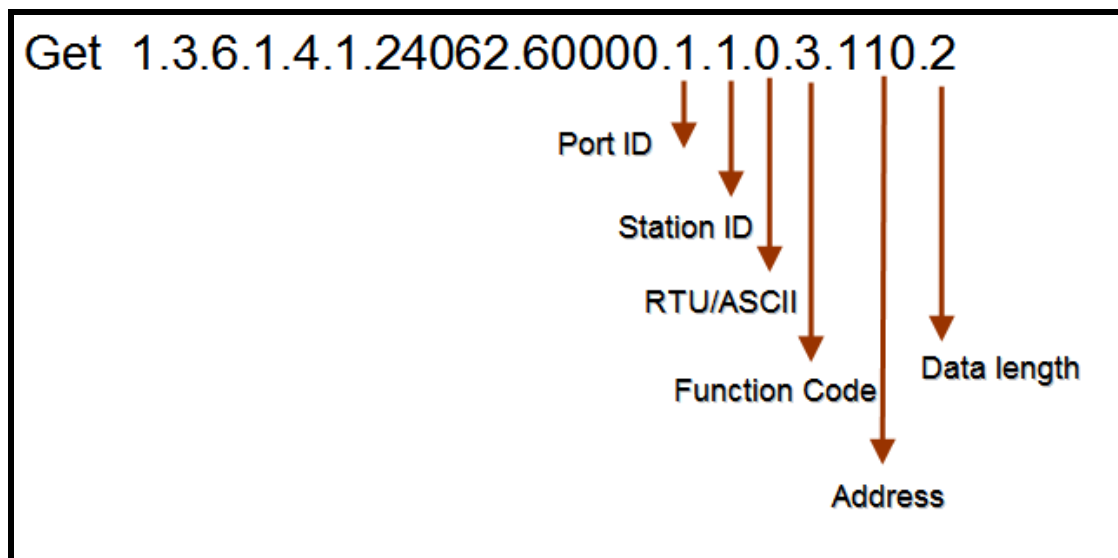
JetBox9310(-w)

Chapter 2 Modbus2SNMP

2-1 How to Map Modbus ID to SNMP OID

There is a Modbus program inside JetBox to map the Modbus ID and data to SNMP OID. The program identifies the data and alarm points that can be read from the device by a master through SNMP and connects each point to the Modbus address needed to access it. Users can read and write the Modbus message through the mapping mechanism for different applications.

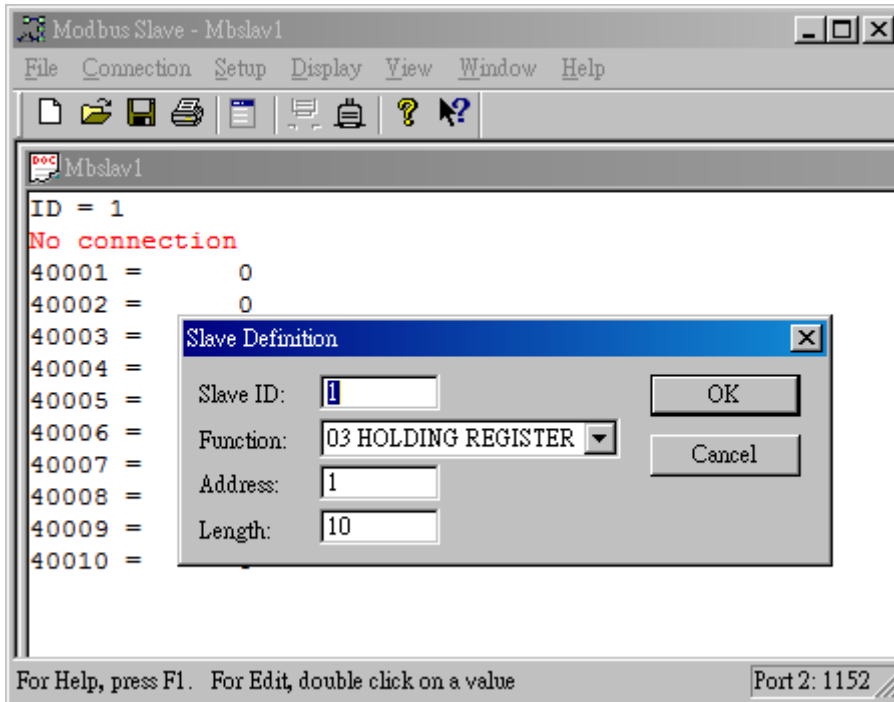
Following is the mapping rule for Modbus2SNMP program.



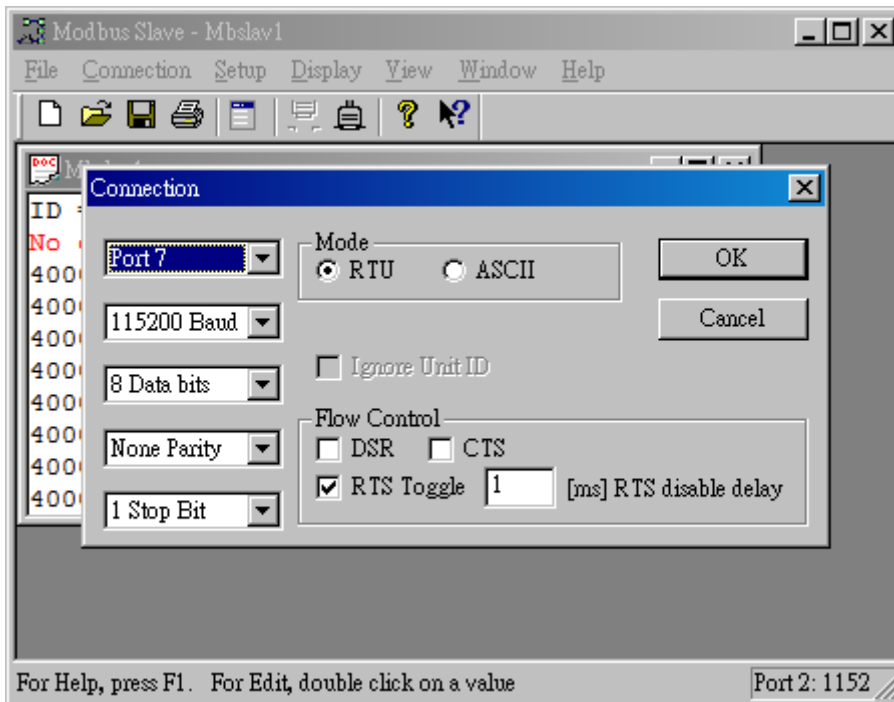
2-2 How to Use Modbus2SNMP

Following is an example to show how to use MOdbus2SNMP by an emulator.

1. Execute “Modbus slave”



2. Open a com port and set the baud rate as 115200



- Use the same baud rate setting on the JetBox web UI

korenix
JETBOX

Your Industrial Computing & Networking P

JetBox9310

- System
- Device Configuration
- Network Configuration
- Serial Port Configuration
 - Serial Setting**
 - Service mode
- DIO Configuration
- Backup and Restore
- Firmware Upgrade
- Factory Default
- System Reboot
- Save
- Logout

Serial Setting

Port Number	Port1
Interface	RS232
Baud Rate	115200
Data Bits	8
Stop Bits	1
Parity	None
Flow Control	None

Notice : Please re-connect TCP socket after serial port configuration.

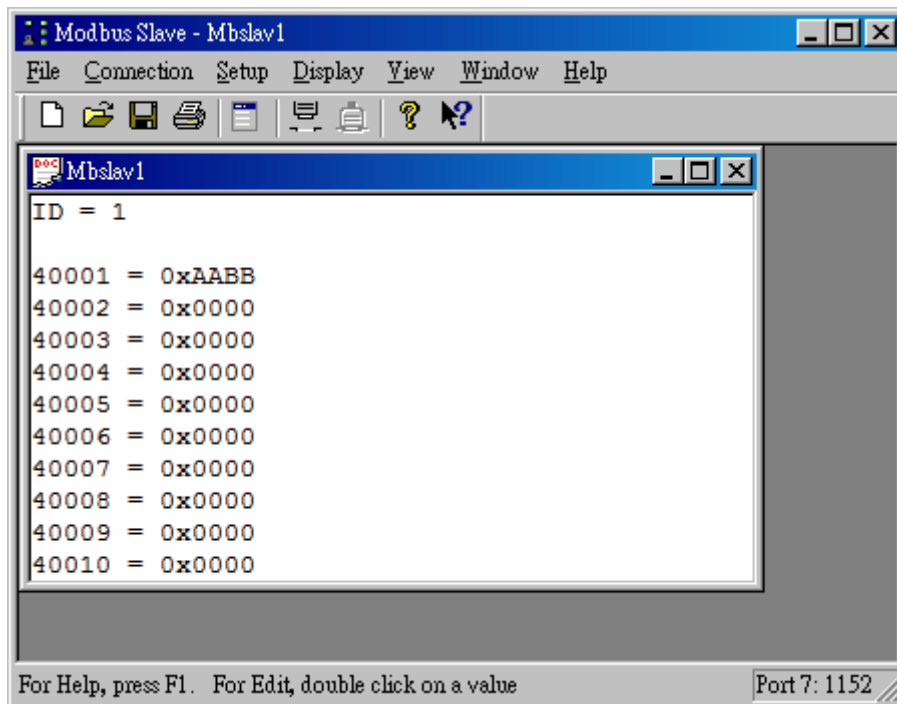
Apply

- Use following command to update the value of modbus slave 40001 through SNMP

```
snmpset -v 1 -c private 192.168.10.1 1.3.6.1.4.1.24062.60000.1.1.0.6.1.1.1 s "0xaa 0xbb"
```

```
SNMPv2-SMI::enterprises.24062.60000.1.1.0.6.1.1 = STRING: "0xaa 0xbb"
```

1.1.0.6.1.1 (jetbox port1, station 1, rtu, write, address 1,data length 1)



5. Get the updated value of modbus slave through SNMP

```
snmpget -v 1 -c private 192.168.10.1 1.3.6.1.4.1.24062.60000.1.1.0.3.1.1  
SNMPv2-SMI::enterprises.24062.60000.1.1.0.3.1.1 = STRING: "01 03 02 aa  
bb 86 97 "
```

Chapter 3 Appendix

3-1 Revision history

V0.2 by 2011/ 4/ 12

- First release

3-2 Customer Service

Korenix Technologies Co., Ltd.

Business service: sales@korenix.com

Customer service: koreCARE@korenix.com