

# Support/Remote demo/ VPN Installation guide

## Index

Support/Remote demo/ VPN Installation guide .....	1
1. Support OS of your notebooks: WindowsXP, Windows7 .....	2
2. Download OpenVPN_files.rar from www.korenixembedded.com .....	2
3. Unzip OpenVPN_files.rar. There are 5 files in the folder.....	2
4. Steps show the details to install OpenVPN client on your notebook and how to connect it. ....	2

1. Support OS of your notebooks: WindowsXP, Windows7

2. Download OpenVPN\_files.rar from [www.korenixembedded.com](http://www.korenixembedded.com)

3. Unzip OpenVPN\_files.rar. There are 5 files in the folder.

✧ ca.crt

✧ client1.crt

✧ client1.key

➔ These 3 files are the VPN certificate file. Kindly put them under C:\tmp\

✧ openvpn-2.1.1-install.exe

➔ Install it by double click

✧ openvpn.ovpn

➔ After installing openvpn-2.1.1-install.exe, kindly put this configuration file under C:\Program Files\OpenVPN\config”

4. Steps show the details to install OpenVPN client on your notebook and how to connect it.

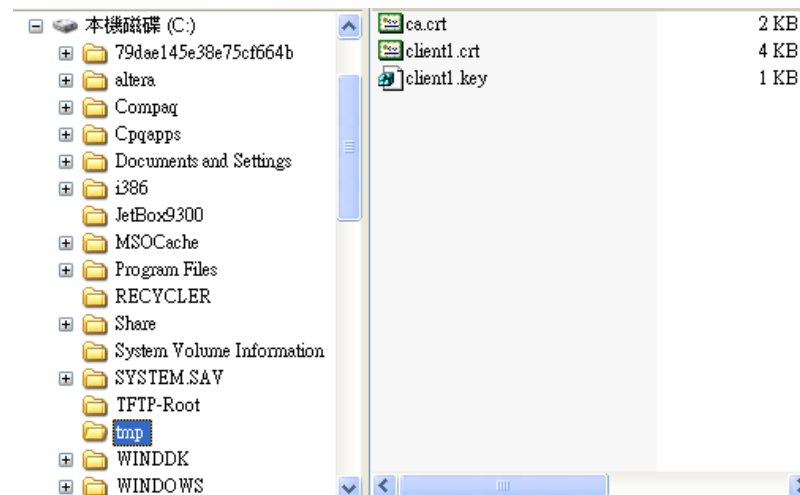
Note: The screen shots are based on windows XP OS.

4.1 Copy 3 files to “C:\tmp\”. It’s the certificate files for building up a VPN connection

✧ ca.crt

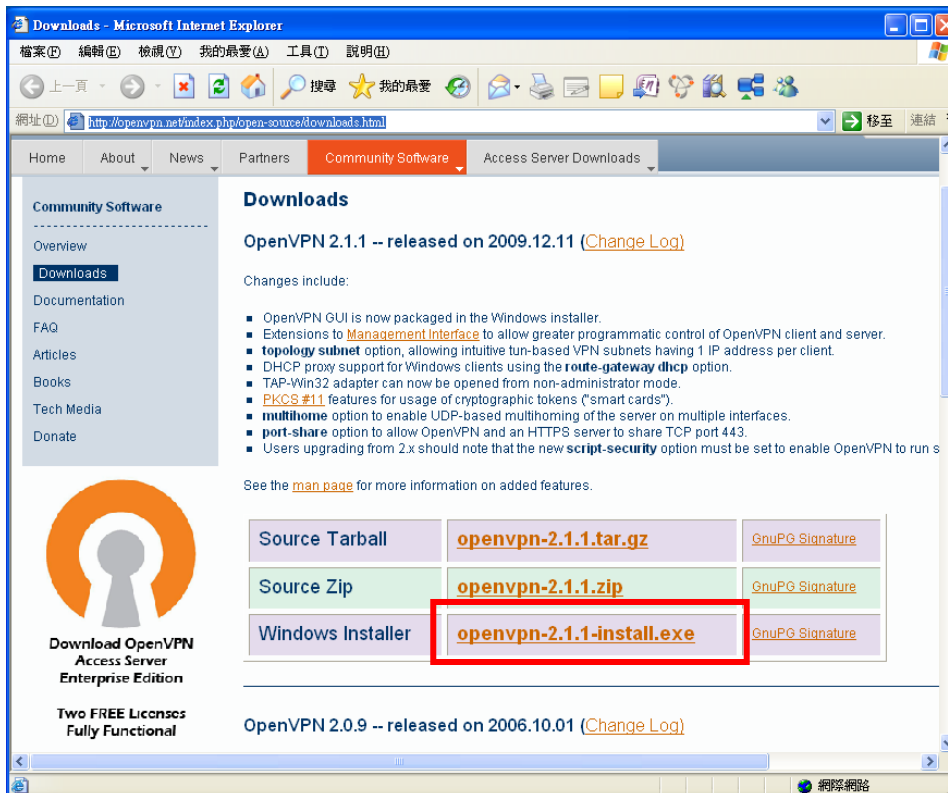
✧ client1.crt

✧ client1.key



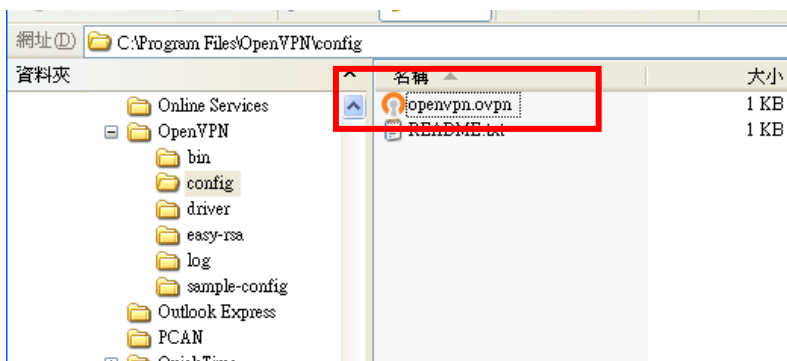
4.2 Execute “openvpn-2.1.1-install.exe” from the unzip folder by double click. You can also download the latest version OpenVPN Windows installer from the website.

<http://openvpn.net/index.php/open-source/downloads.html>



4.3 Finish the installation processes and use the default setting.

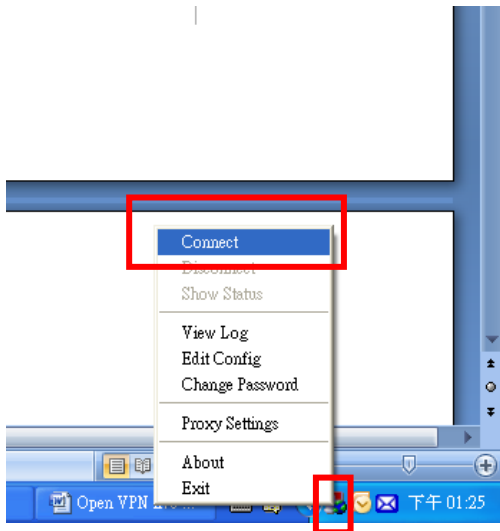
4.4 Copy file "openvpn.ovpn" from OpenVPN\_files.rar into the folder "C:\Program Files\OpenVPN\config"



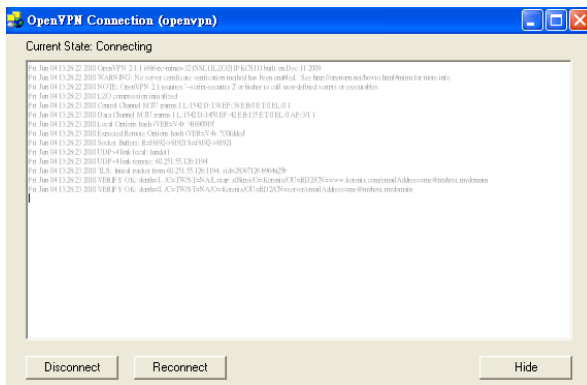
4.5 Run "OpenVPN Administrator" from Windows "Start->Program->OpenVPN"



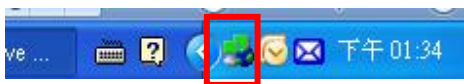
4.6 From tool bar, right click the OpenVPN GUI icon and select "Connect" icon.



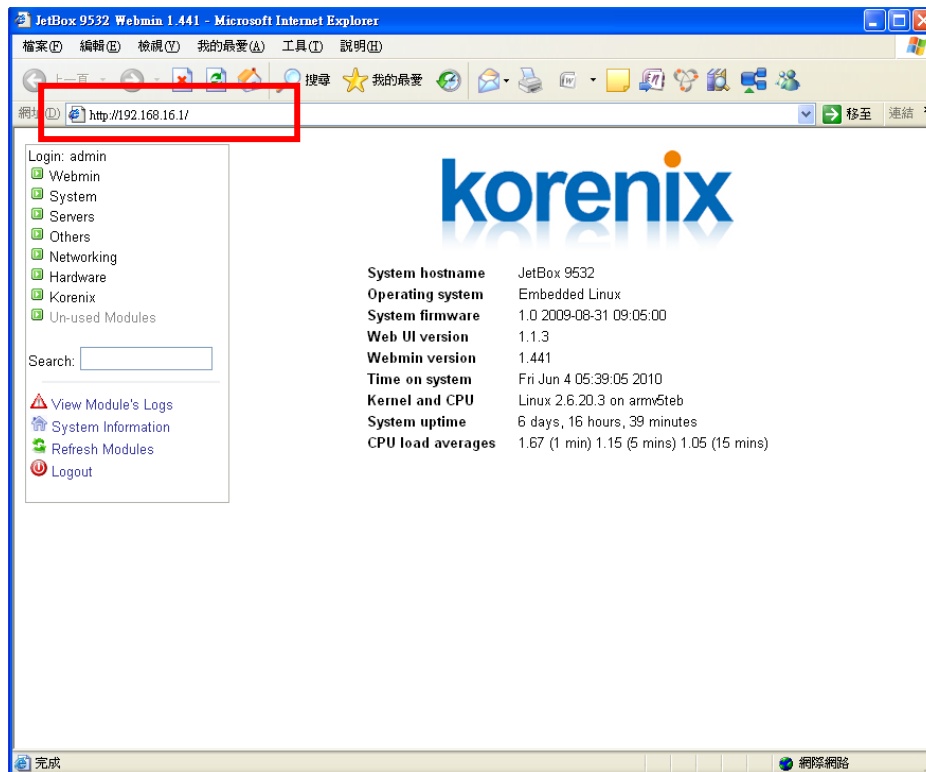
4.7 There is a window to show the connection status.



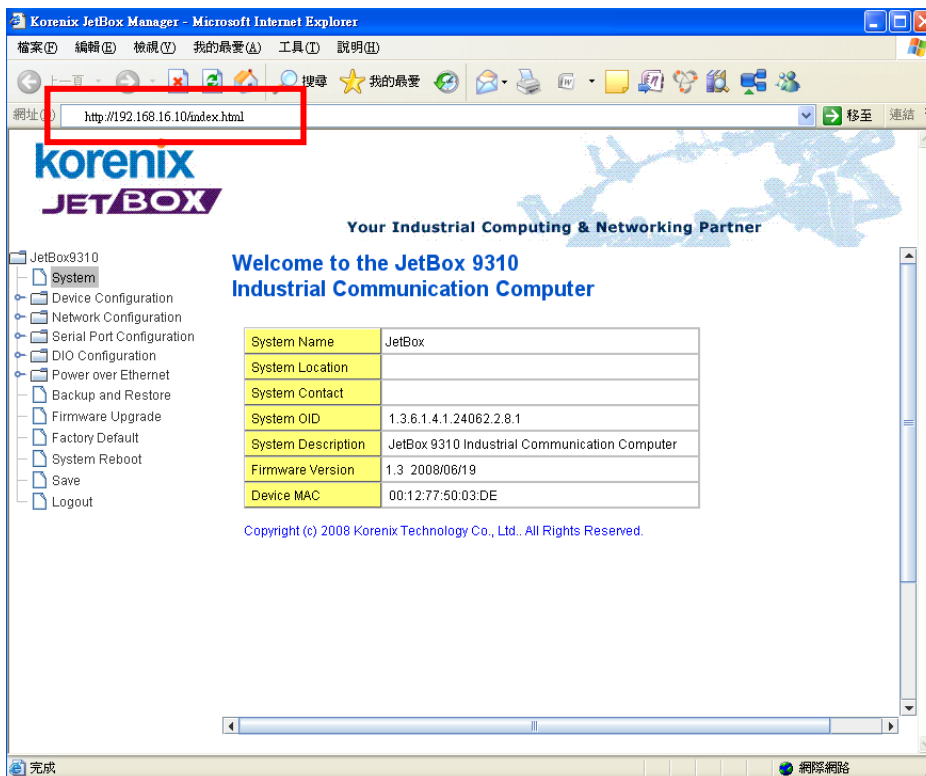
4.8 After 1 minute, the OpenVPN GUI icon in the tool bar should become green. This means the connection was established.



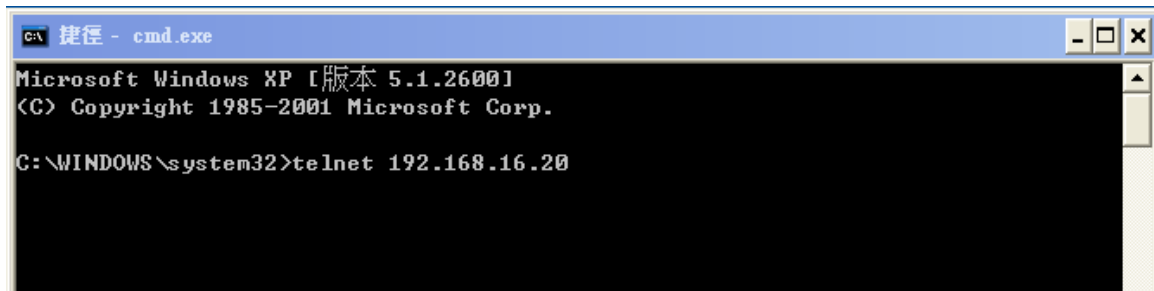
4.9 Open a Web browser; fill in the IP address “192.168.16.1” to access the JetBox9532 through the established VPN connection. The user name/password of the Jetbox9532 webmin are admin/admin.



4.10 Or open a Web browser; fill in the IP address “192.168.16.10” to access the JetBox9310 through the established VPN connection. The user name/password of the JetBox9310 is admin/admin.

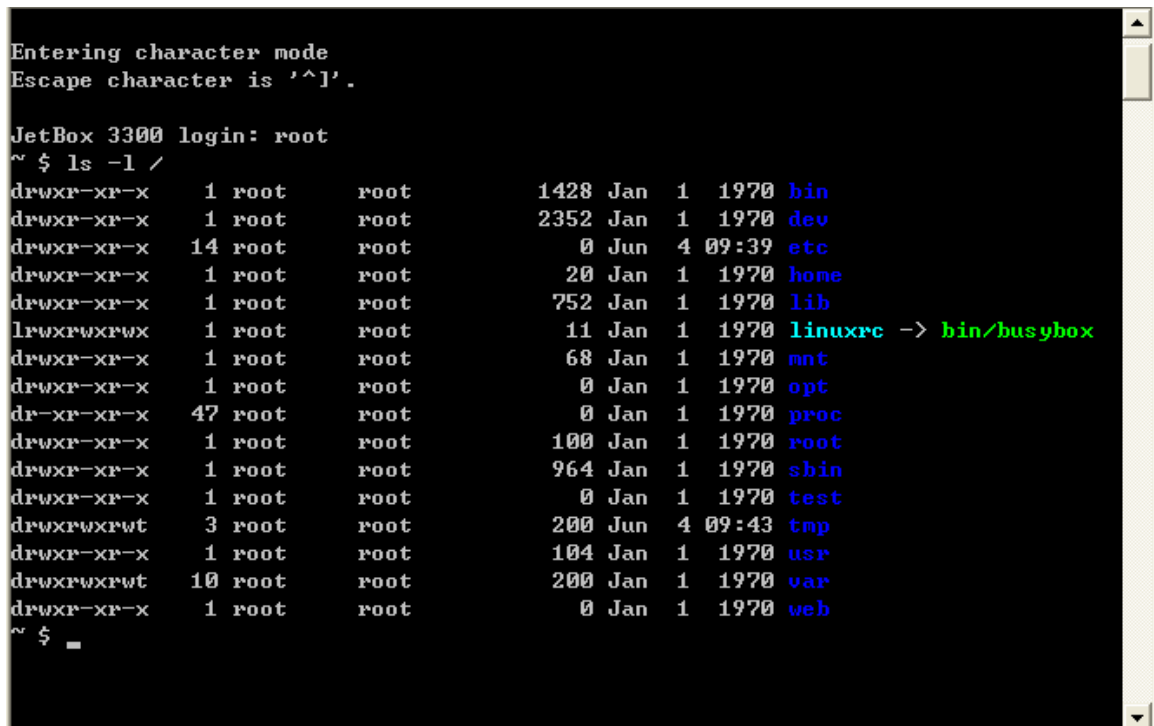


4.11 Or open a telnet utility; fill in the IP address “192.168.16.20” to access the JetBox3300 through the established VPN connection. The user name of the JetBox3300 is **root**.



```
ca\ 快捷 - cmd.exe
Microsoft Windows XP [版本 5.1.2600]
(C) Copyright 1985-2001 Microsoft Corp.

C:\WINDOWS\system32>telnet 192.168.16.20
```



```
Entering character mode
Escape character is '^]'.

JetBox 3300 login: root
~ $ ls -l /
drwxr-xr-x  1 root  root  1428 Jan  1  1970 bin
drwxr-xr-x  1 root  root  2352 Jan  1  1970 dev
drwxr-xr-x 14 root  root    0 Jun  4 09:39 etc
drwxr-xr-x  1 root  root   20 Jan  1  1970 home
drwxr-xr-x  1 root  root  752 Jan  1  1970 lib
lrwxrwxrwx  1 root  root   11 Jan  1  1970 linuxrc -> bin/busybox
drwxr-xr-x  1 root  root   68 Jan  1  1970 mnt
drwxr-xr-x  1 root  root    0 Jan  1  1970 opt
dr-xr-xr-x 47 root  root    0 Jan  1  1970 proc
drwxr-xr-x  1 root  root  100 Jan  1  1970 root
drwxr-xr-x  1 root  root  964 Jan  1  1970/sbin
drwxr-xr-x  1 root  root    0 Jan  1  1970 test
drwxrwxrwt  3 root  root  200 Jun  4 09:43 tmp
drwxr-xr-x  1 root  root  104 Jan  1  1970 usr
drwxrwxrwt 10 root  root  200 Jan  1  1970 var
drwxr-xr-x  1 root  root    0 Jan  1  1970 web
~ $ _
```